

TYPHIDOT RAPID IgG/IgM (COMBO) TEST

TYPHIDOT

Typhidot is a revolutionary method of diagnosis. Invented in Malaysia, it is the first known qualitative antibody detection test design for rapid diagnosis of typhoid fever. Using the Dot EIA technique, presence of IgM and IgG antibodies against a specific antigen on the outer membrane of *Salmonella Typhi* are detected. Typhidot has been evaluated by many endemic areas including Malaysia, India, Indonesia, Pakistan and the Philippines. A control clinical field trial among febrile children admitted to a hospital in an endemic area showed that Typhidot when compared to culture is sensitive (95%) and did not show any cross-reactions.

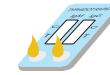
FEATURES:

	Immunochromatography assay
	Cassette
	Human IgM or IgG/IgM against <i>S.typhi</i> OMP antigen
	Serum/ Plasma or Whole blood
Specimen Volume	30-35µl
	15 minutes



Typhidot Rapid IgG & IgM (combo)

Assay Procedure

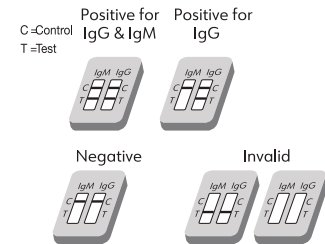


Step 1
Add serum/plasma to each sample well.



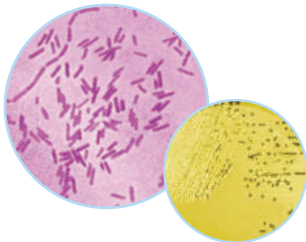
Step 2
Up to area C, add one drop buffer to each well.
Read result within 15-20 minutes

Interpretation Of Result :



Please refer to product insert for detailed instruction.

Typhidot Rapid Test Kits



FAST!! Results within 15 minutes

Results are EASY to INTERPRET
- test line appears means POSITIVE RESULTS

MINIMAL sample volume is required

The test kits are designed for the qualitative detection and differentiation of specific IgM or IgG/IgM antibodies against specific *S. typhi* antigen.